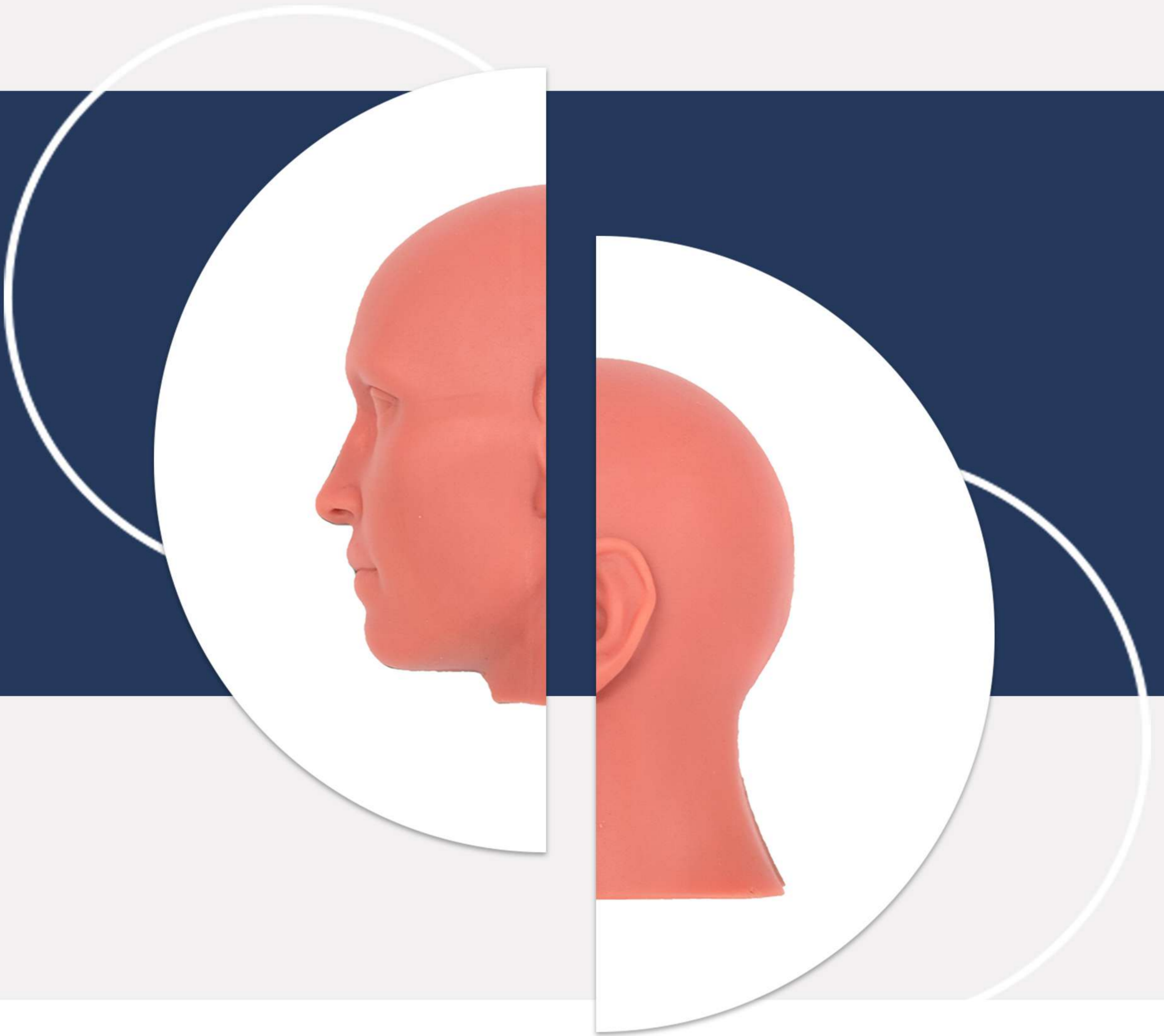


INSTRUCTION GUIDE



GPHANTOM FACE ATM

LEARN. PRACTICE. IMPROVE.



INSTRUCTION GUIDE

Thank you for choosing **Gphantom!**

We are a company specialized in the development of solutions for medical training. If you want a specific model for your training, contact us. Here we will help you to handle and optimize the durability of your product.

Your **Gphantom Face ATM** is eligible for our Fidelity Program.

Consult conditions.



LEARN. PRACTICE. IMPROVE.



ABOUT YOUR PRODUCT

Gphantom Face ATM is a simulator designed for the training of intra-articular injections, whether blind or ultrasound-guided, targeting the upper and lower joint spaces of the temporomandibular joint (TMJ). Developed in collaboration with experts in the field, this model replicates the anatomy of the TMJ, ensuring a more realistic and precise training experience. In addition to providing multimodal training, with the option to simulate blind or ultrasound-guided intra-articular injections, it caters to a wide range of training needs.

The simulator is versatile and suitable for various skill levels, ranging from beginners in general imaging techniques and guidance of intra-articular injection procedures using ultrasound, to more experienced practitioners focusing on procedures specific to the TMJ. This allows for continuous skill enhancement through repeated practice, ensuring that professionals stay at the forefront of the evolving techniques of intra-articular injections targeted at the TMJ.

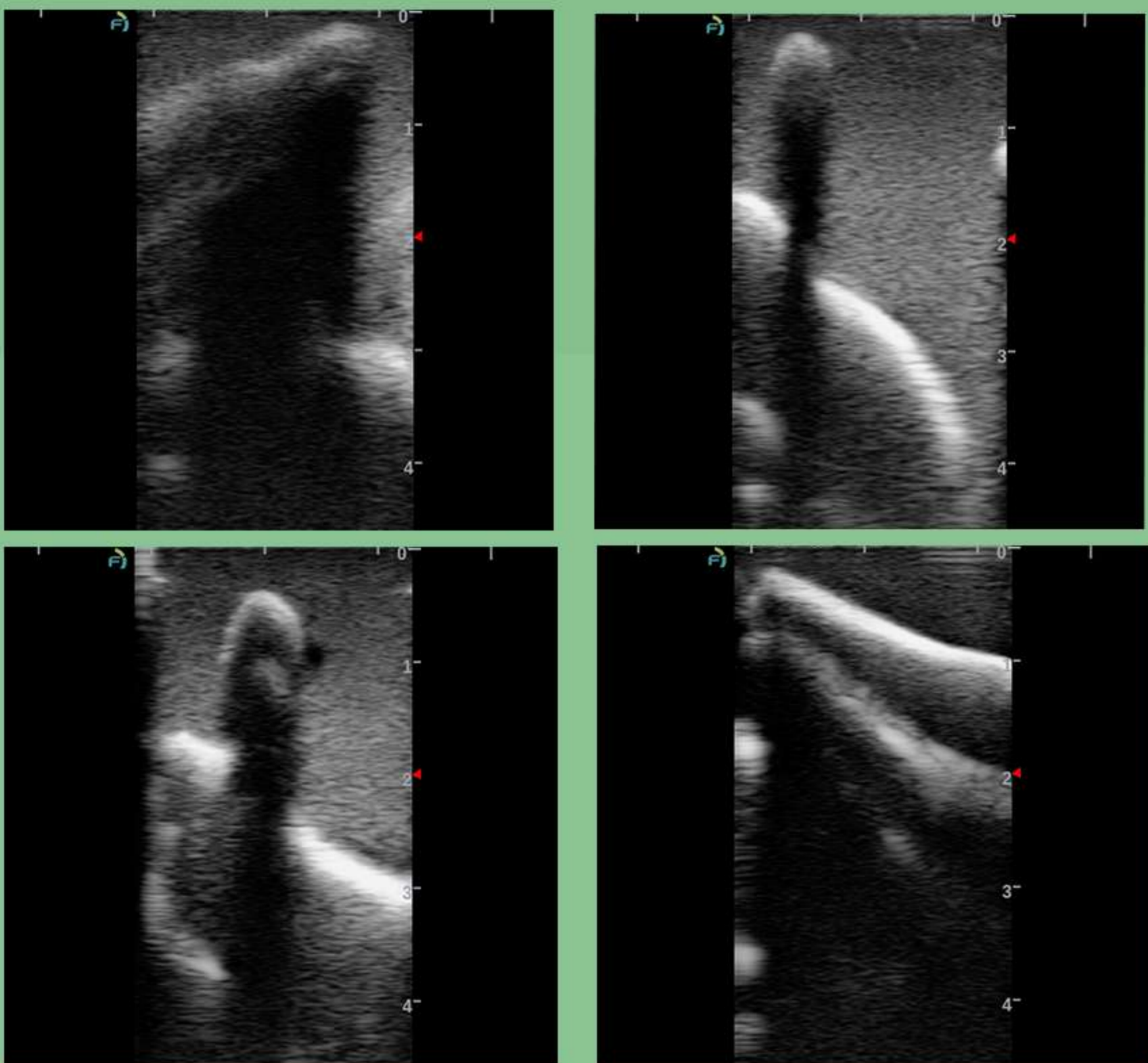
Our needle mark recovery technology enables your Gphantom to recover up to 99% of needle marks within 48 hours after training, when using needles with thicknesses equal to or less than 23 G. To maximize the benefits of this needle mark recovery technology, we recommend placing your product in a cool, shaded area for 48 hours after each use.

If you have such a need, please contact us.



ABOUT YOUR PRODUCT

SPECIFICATIONS



B mode ultrasound images of Gphantom Face ATM.

PRODUCT CODE	PBD050518
APPROXIMATE WEIGHT	1,100kg
LENGTH	25cm
HEIGHT	25cm
WIDTH	12cm



HANDLING AND MAINTENANCE

- ① Always keep your product in a fresh place, sheltered from the sun.

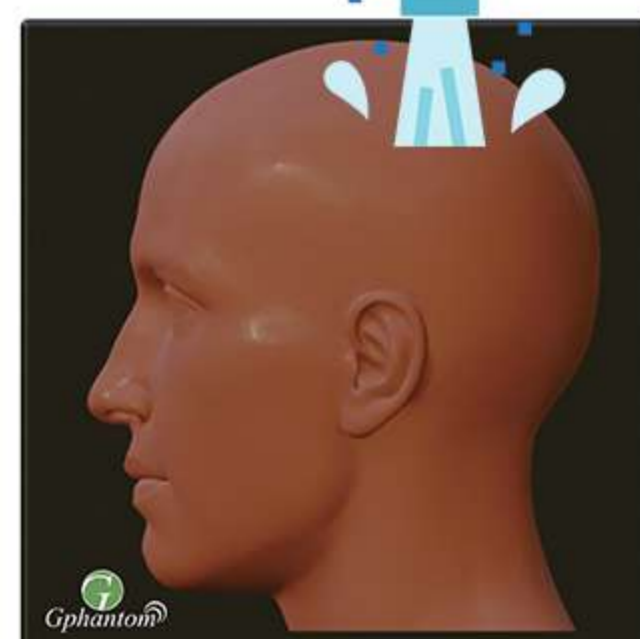


OBS: Expose your Gphantom to temperatures above 30°C (86°F), for long periods, can cause deformations and loss of properties;

- ② For training, remove only the packaging lid, keeping it in the original base;



- ③ After training, clean the product with a paper towel, removing excess gel for ultrasound and, then, wash it under running water without removing it from the base.



Do not store your Gphantom with excess gel, it may cause bad smell, thus reducing product durability.

Do not use detergents or sponges, as these damage the product!



HANDLING AND MAINTENANCE

- ④ After cleaning, store your Gphantom according to instructions contained in item I;
- ⑤ Gphantom is a product for educational purposes, intended, ONLY, for medical training. In case of doubt, contact us through our relationship channels.

CONTACT US

For any questions or requests, contact us:



contato@gphantom.com.br



+55 1699848-2468