

# INSTRUCTION GUIDE



**GPHANTOM HIP**

LEARN. PRACTICE. IMPROVE.



# INSTRUCTION GUIDE

Thank you for choosing **Gphantom!**

We are a company specialized in the development of solutions for medical training. If you want a specific model for your training, contact us. Here we will help you to handle and optimize the durability of your product.

Your **Gphantom Hip** is eligible for our Fidelity Program.

Consult conditions.



LEARN. PRACTICE. IMPROVE.





# ABOUT YOUR PRODUCT

Gphantom Hip is an anatomical simulator of the hip region, available in two configurations: Complete or Simplified.

In the simplified configuration the model has parts of the hip bone structures (pelvis and femur). On the other hand, the complete version also simulates the iliiofemoral and pubofemoral ligaments and the acetabular cartilage.

Gphantom Hip, in both versions, is designed for the training of ultrasound-guided procedures such as intra-articular blocks and infiltrations.

\*NOTE: The model does not allow articulation of the bone structure.

Our needle mark recovery technology enables your Gphantom to recover up to 99% of the needle marks within 48 hours after training, when using needles with thicknesses of 21 G or less. For best use of this needle mark recovery technology, we recommend that you leave your product in a cool, dry place for 48 hours after each use;

We recommend movements of up to 30 degrees in relation to the product surface, using needles such as the ones mentioned in the previous item. Avoid very long movements (large angles) after needle insertion, as these may shorten the life of your model. In addition, we do not recommend injecting or removing materials from your Gphantom during use.

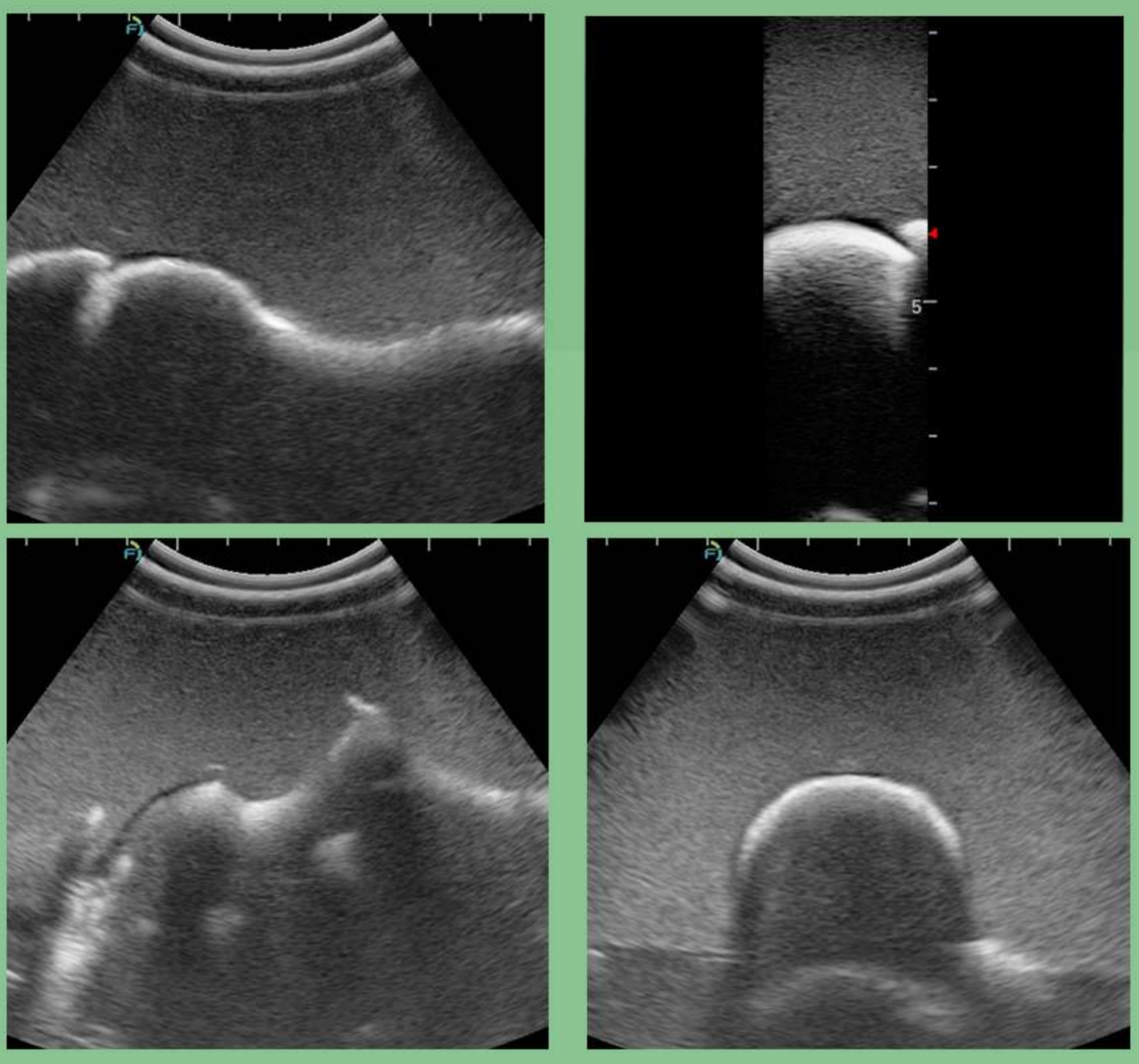
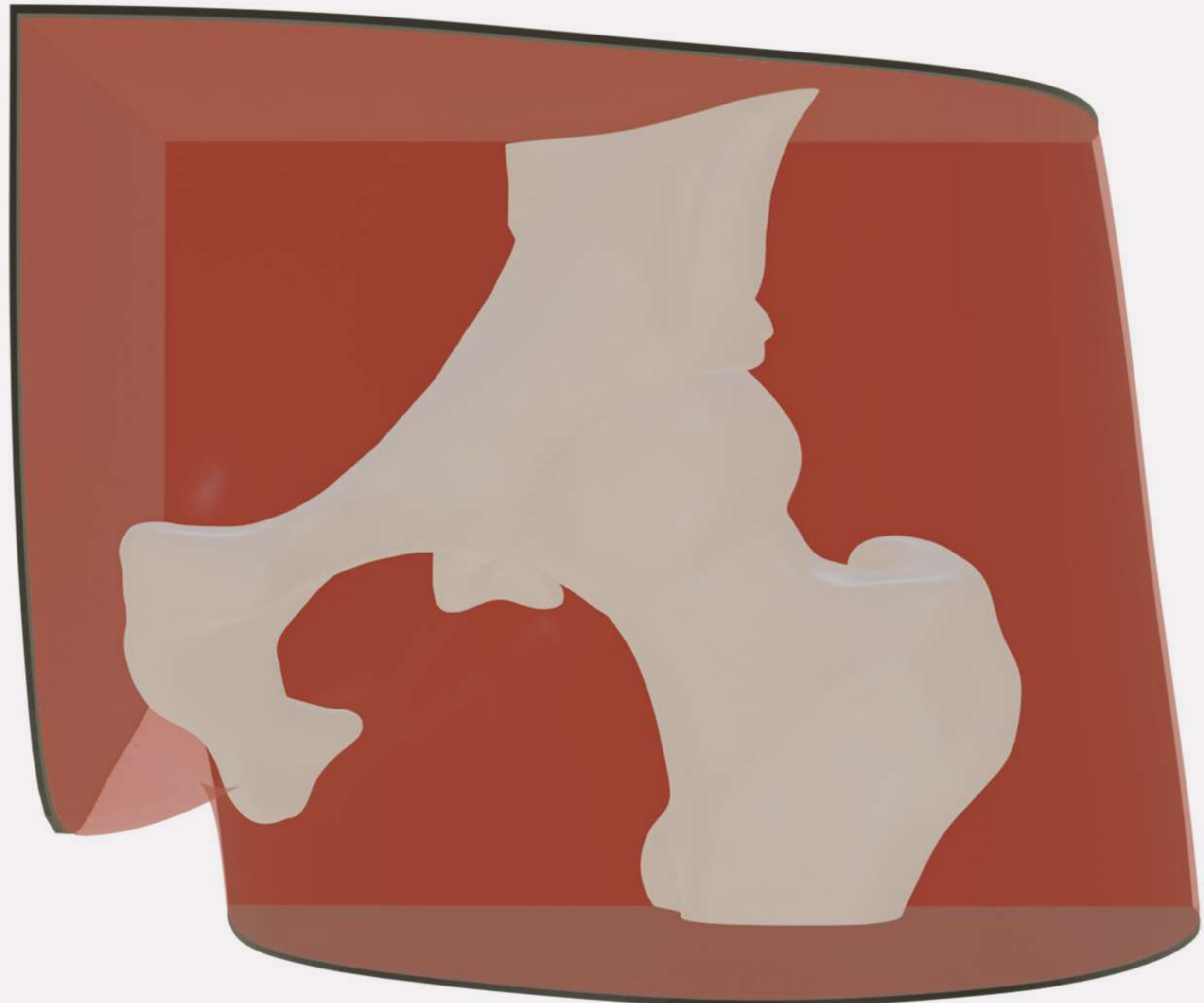
If you have such a need, please contact us.





# ABOUT YOUR PRODUCT

INTERNAL STRUCTURES



B mode ultrasound images of Gphantom Hip.

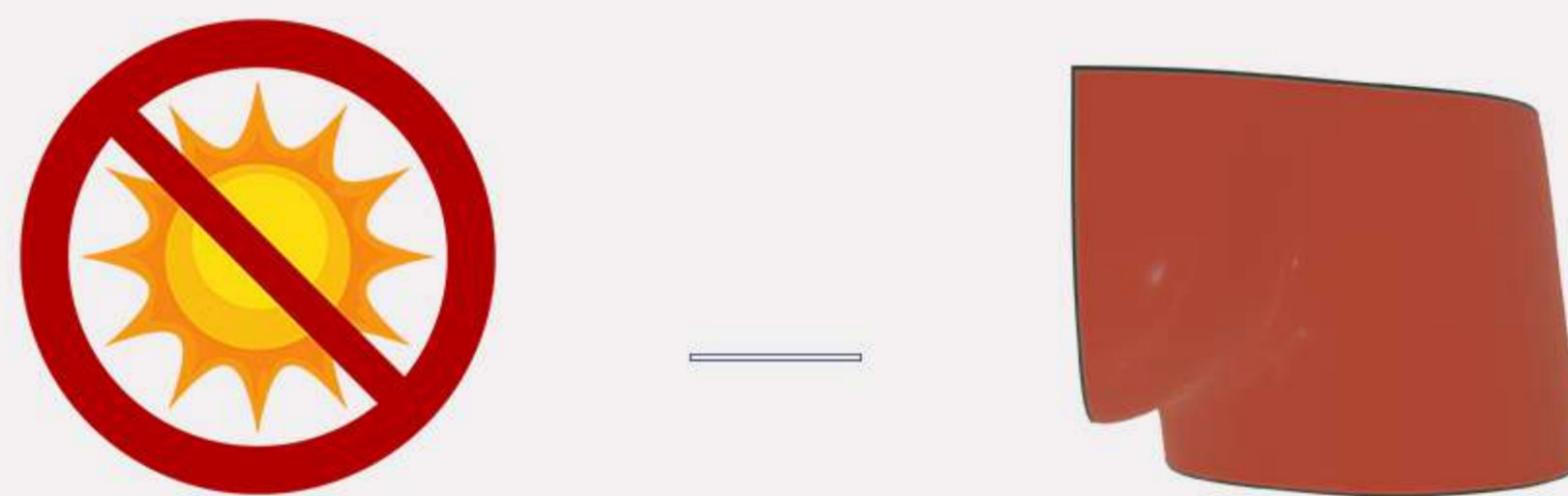
<b>PRODUCT CODE</b>	<b>PBD050512B</b>
<b>APPROXIMATE WEIGHT</b>	<b>1,172kg</b>
<b>LENGTH</b>	<b>14,4cm</b>
<b>HEIGHT</b>	<b>11,6cm</b>
<b>WIDTH</b>	<b>9cm</b>





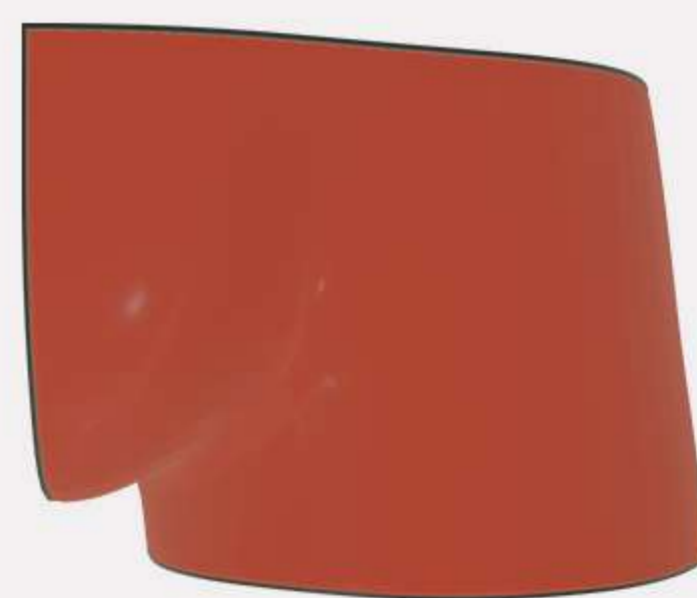
# HANDLING AND MAINTENANCE

- ① Always keep your product in a fresh place, sheltered from the sun.

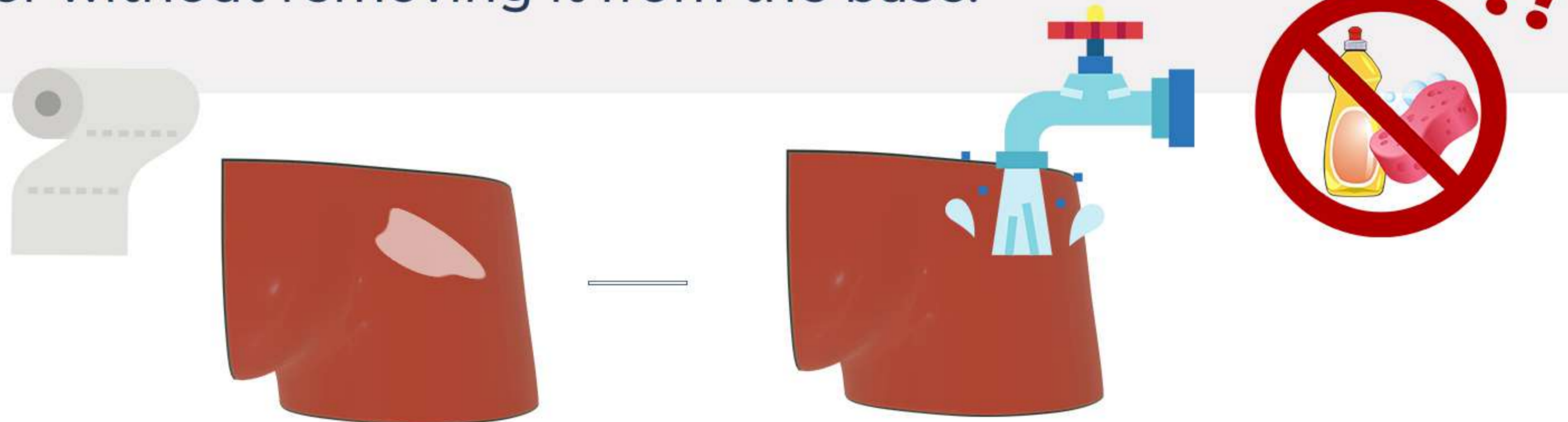


OBS: Expose your Gphantom to temperatures above 30°C (86°F), for long periods, can cause deformations and loss of properties;

- ② For training, remove only the packaging lid, keeping it in the original base;



- ③ After training, clean the product with a paper towel, removing excess gel for ultrasound and, then, wash it under running water without removing it from the base.



Do not store your Gphantom with excess gel, it may cause bad smell, thus reducing product durability.

Do not use detergents or sponges, as these damage the product!





# HANDLING AND MAINTENANCE

- ④ After cleaning, store your Gphantom according to instructions contained in item I;
- ⑤ Gphantom Hip is a product for educational purposes, intended, ONLY, for medical training. In case of doubt, contact us through our relationship channels.

# CONTACT US

For any questions or requests, contact us:



[contato@gphantom.com.br](mailto:contato@gphantom.com.br)



+55 1699848-2468